

MATERIAL SCHEDULE:

- PL-1:  
FORMICA  
"CHESTNUT WOODLINE"  
#5884-58
- SS-1:  
CORIAN  
"LAVA ROCK"
- 3MM PVC EDGEBAND:  
CANPLAST  
8011

HARDWARE SCHEDULE:

- HW-1:  
4" WIRE PULL  
STEEL - BRUSHED FINISH  
HAFELE #116.07639
- HW-2:  
GRASS  
NEXUS 22 SERIES  
FULL OVERLAY HINGE
- HW-3:  
GRASS  
ZARGEN DRAWER SYSTEM  
6036/510
- HW-4:  
GRASS  
ZARGEN DRAWER SYSTEM  
6236/510

REVISIONS:


SHEET DESCRIPTION:

2ND FLOOR KEY PLAN

JOB NAME:

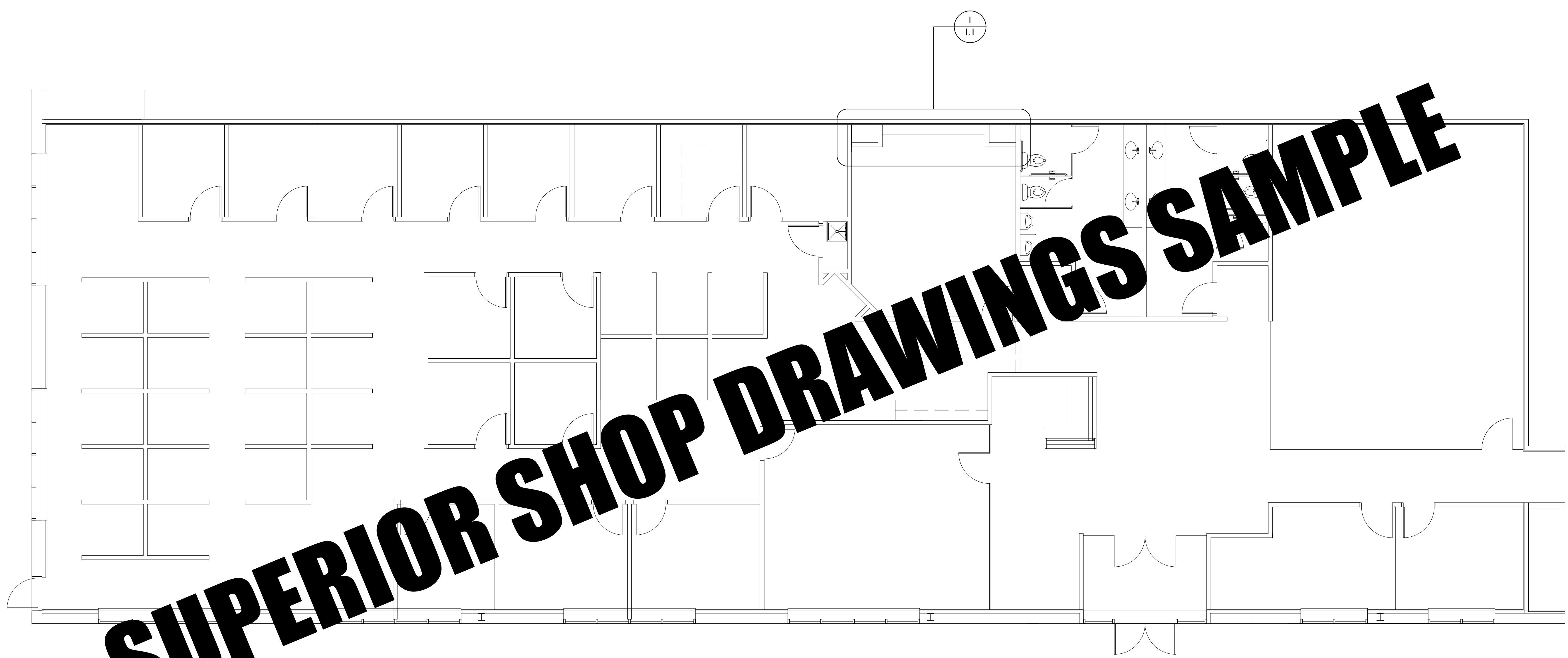
SAMPLE PROJECT

SCALE: AS NOTED SHEET:

DATE: 05/01/2018

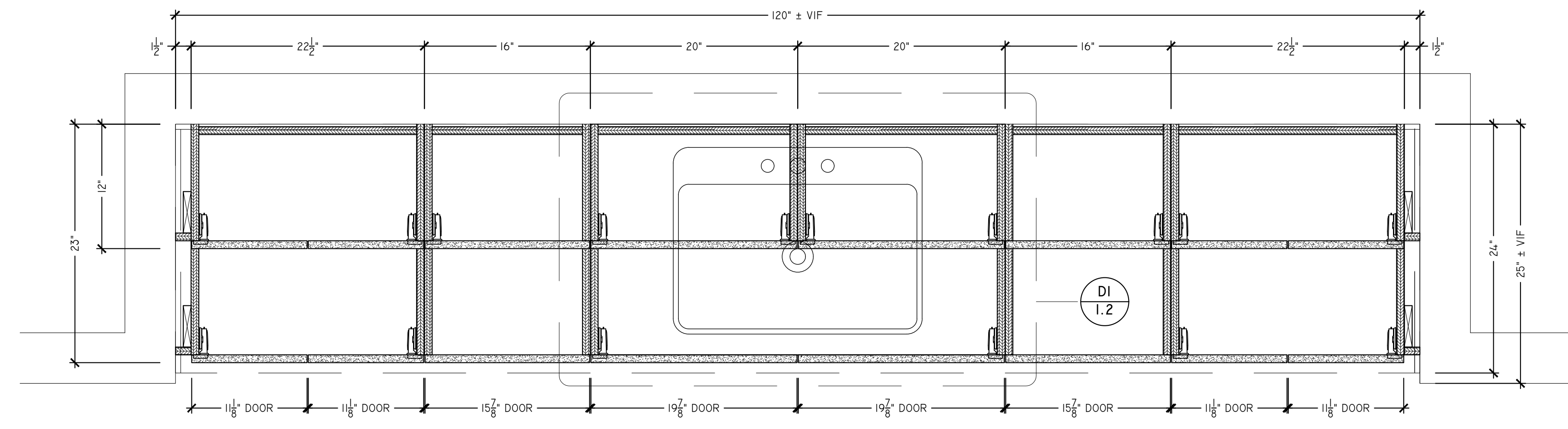
DRAFTER: SSD-WW

**KP**

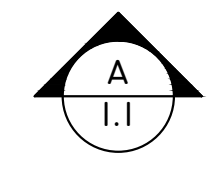


PLAN  
2ND FLOOR KEY PLAN  
SCALE: 3/16" = 1'-0"

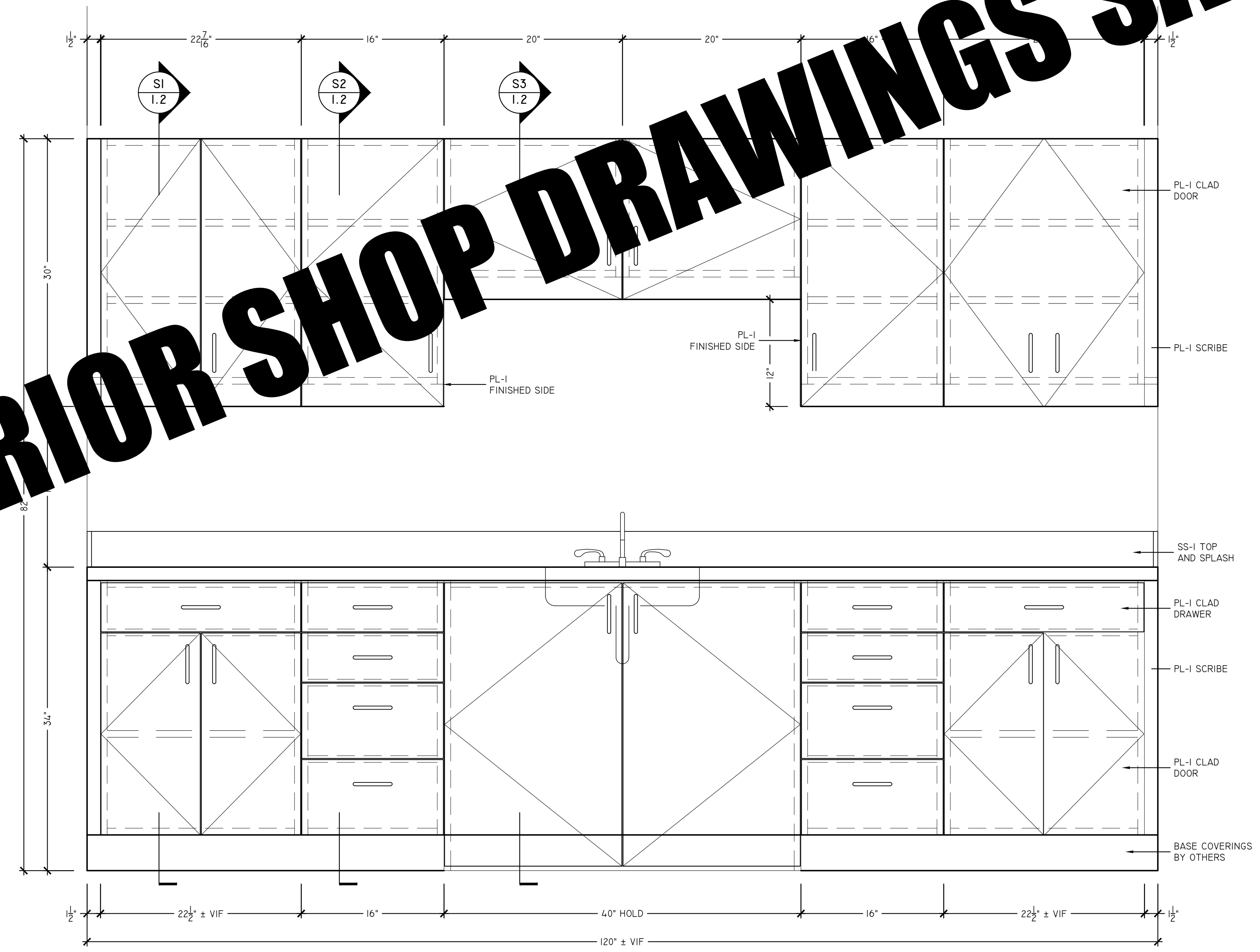
MATERIAL SCHEDULE:  
 PL-1:  
 FORMICA  
 "CHESTNUT WOODLINE"  
 #5884-58  
 SS-1:  
 CORIAN  
 "LAVA ROCK"  
 3MM PVC EDGE BAND:  
 CANPLAST  
 8011



PLAN  
 KITCHENETTE - RM. 230  
 SCALE: 1" = 1'-0"



**SUPERIOR SHOP DRAWINGS SAMPLE**



HARDWARE SCHEDULE:  
 HW-1:  
 4" WIRE PULL  
 STEEL - BRUSHED FINISH  
 HAFELE #116.07639  
 HW-2:  
 GRASS  
 NEXUS 22 SERIES  
 FULL OVERLAY HINGE  
 HW-3:  
 GRASS  
 ZARGEN DRAWER SYSTEM  
 6036/510  
 HW-4:  
 GRASS  
 ZARGEN DRAWER SYSTEM  
 6236/510

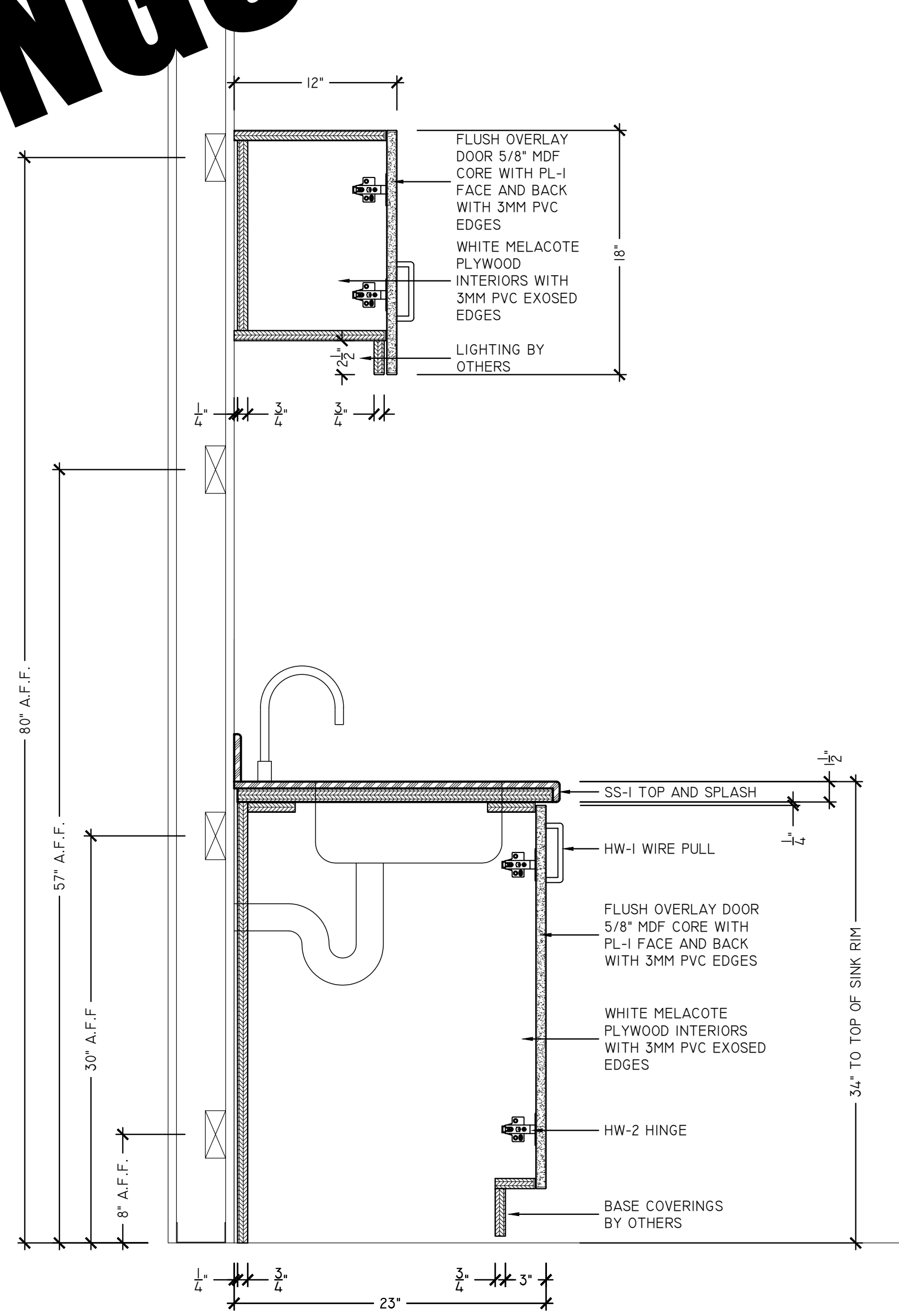
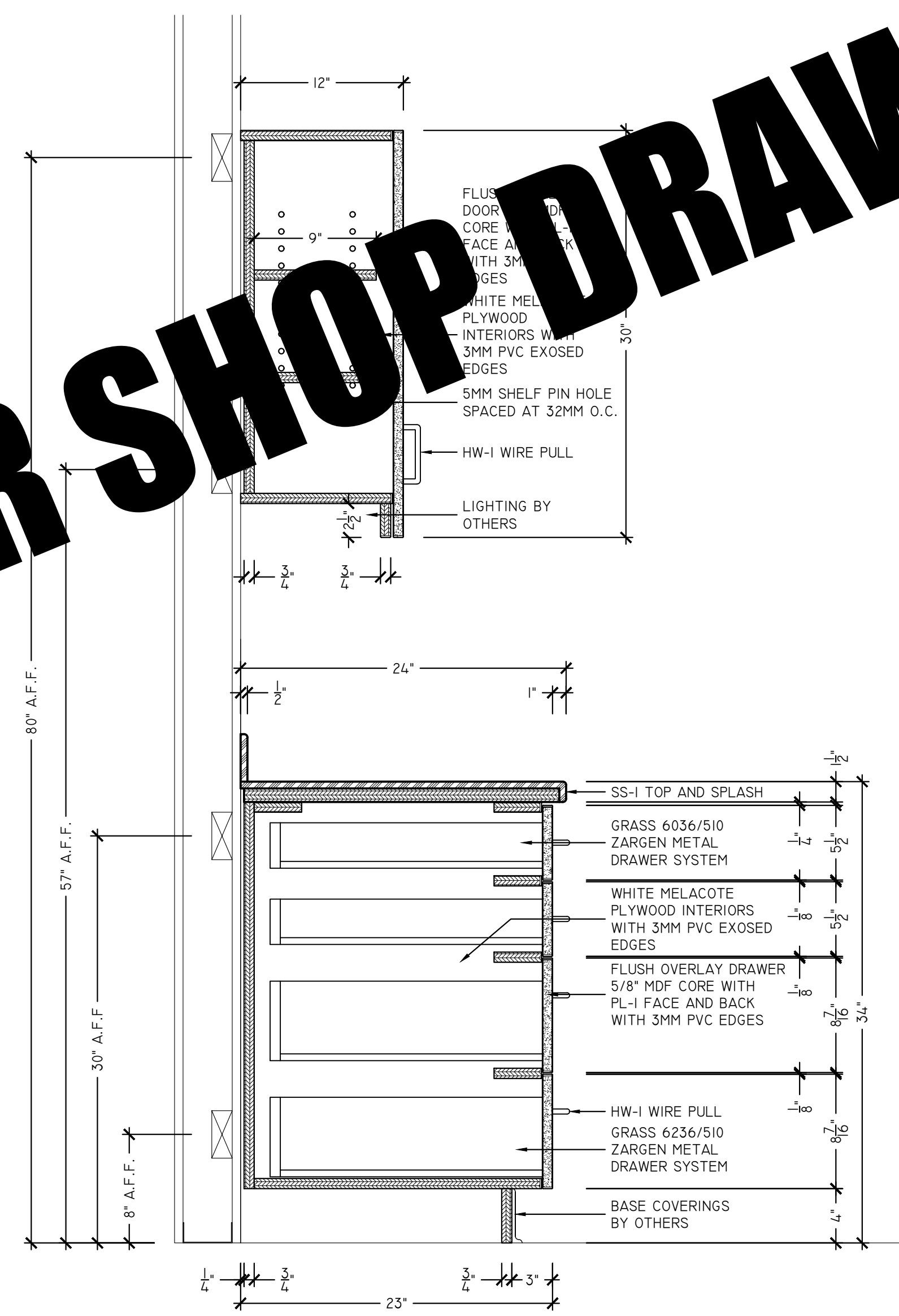
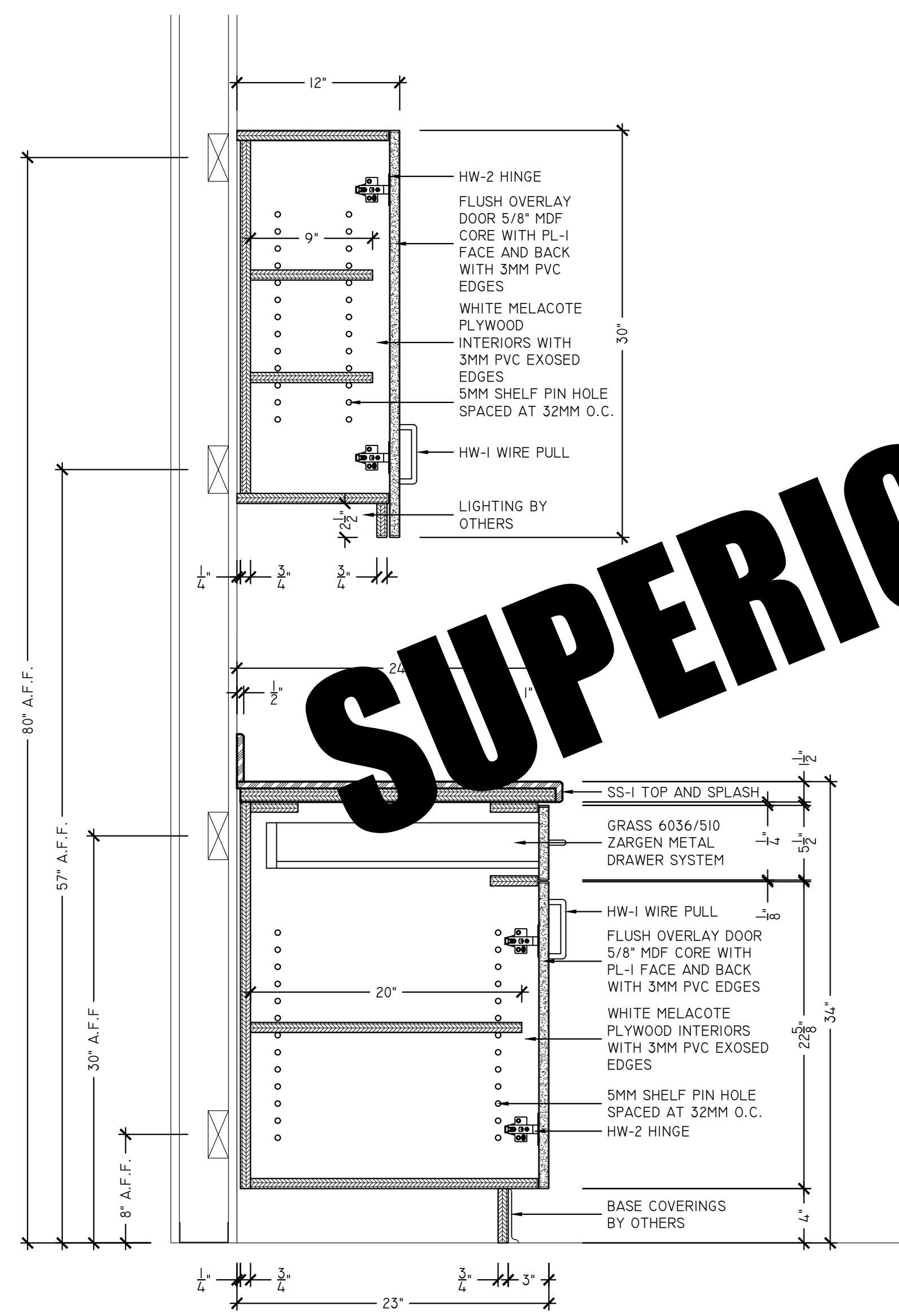
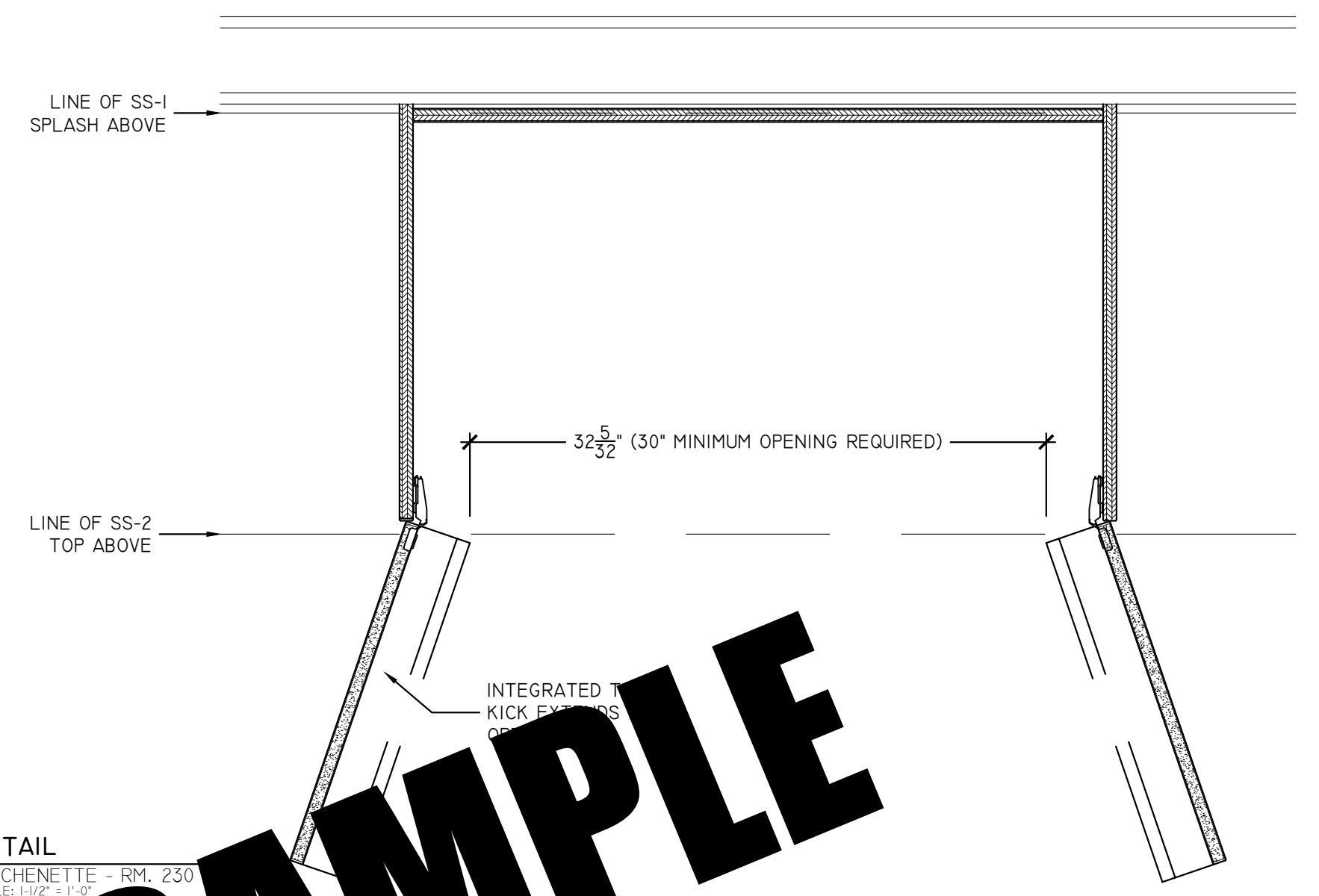
REVISIONS:

NO.	DESCRIPTION

SHEET DESCRIPTION:  
 KITCHENETTE - RM. 230  
 JOB NAME:  
 SAMPLE PROJECT  
 SCALE: AS NOTED SHEET:  
 DATE: 05/01/2018  
 DRAFTER: SSD-WW

MATERIAL SCHEDULE:  
 PL-1:  
 FORMICA  
 "CHESTNUT WOODLINE"  
 #5884-58  
 SS-1:  
 CORIAN  
 "LAVA ROCK"  
 3MM PVC EDGE BAND:  
 CANPLAST  
 8011

DI DETAIL  
 KITCHENETTE - RM. 230  
 SCALE: 1/4" = 1'-0"



SI SECTION  
 KITCHENETTE - RM. 230  
 SCALE: 1/4\"/>

SI SECTION  
 KITCHENETTE - RM. 230  
 SCALE: 1/4\"/>

SI SECTION  
 KITCHENETTE - RM. 230  
 SCALE: 1/4\"/>

**SUPERIOR SHOP DRAWINGS SAMPLE**

HARDWARE SCHEDULE:  
 HW-1:  
 4\"/>

REVISIONS:

NO.	DESCRIPTION

SHEET DESCRIPTION:  
 KITCHENETTE - RM. 230  
 JOB NAME:  
 SAMPLE PROJECT  
 SCALE: AS NOTED SHEET:  
 DATE: 05/01/2018  
 DRAFTER: SSD-WW